

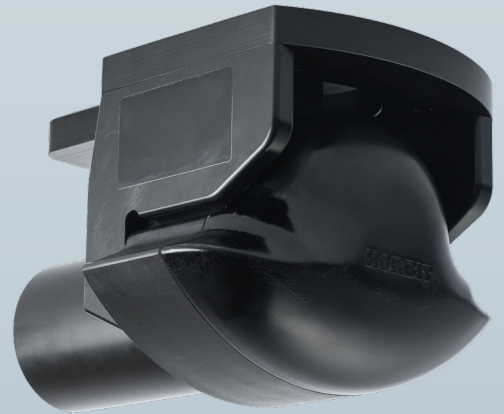
NORBIT - iWBMS_e ENTRY-LEVEL TURNKEY MULTIBEAM SONAR SYSTEM

For Rapid Bathymetric Surveying in Protected Waters

Introducing the all-new entry-level high-resolution curved-array bathymetric mapping system from NORBIT.

This all-in-one tightly integrated broadband multibeam turnkey solution offers high resolution bathymetry over a wide swath. The high-end sonar with globally leading GNSS/Inertial Navigation System (Applanix SurfMaster) embedded into the unit ensures fast and reliable mobilization and highest quality sounding for most conditions.

The iWBMS_e is an ideal choice for protected waterway bathymetric surveys; it may be mobilized on any vessel of opportunity and offers streamlined operability and good performance to match budget and project requirements. Additionally, the kit provides industry's highest resolution multibeam side-scan and snippets for wide swath shallow water applications. The WBMS sonars are based on a state of the art analog and digital platform featuring powerful signal processing capabilities, offering roll stabilized bathymetry and several imagery and backscatter output. With broad R&D expertise NORBIT has developed, from the ground-up, exciting new technology that allows existing and new applications to benefit from the advantages offered by a compact wideband curved-array multibeam sonar.



Features

- ✓ Multibeam Sonar Tightly Integrated with State of the Art GNSS-aided Inertial Navigation System (Applanix SurfMaster)
- ✓ 80kHz Bandwidth
- ✓ Roll-stabilisation, Side-scan, Water Column, Backscatter, Snippets
- ✓ Simple Ethernet Interface
- ✓ Integrated Sound Velocity Probe
- ✓ Hydrodynamic Fairing
- ✓ Mounting Bracket Included
- ✓ FM & CW Processing
- ✓ Flexible Power Option
- ✓ Exceeds IHO *Special Order*, CHS *Exclusive Order* & USACE *New Work*

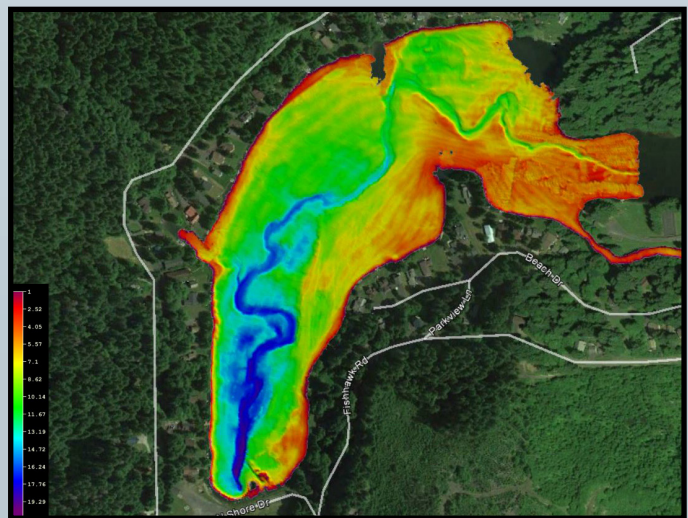
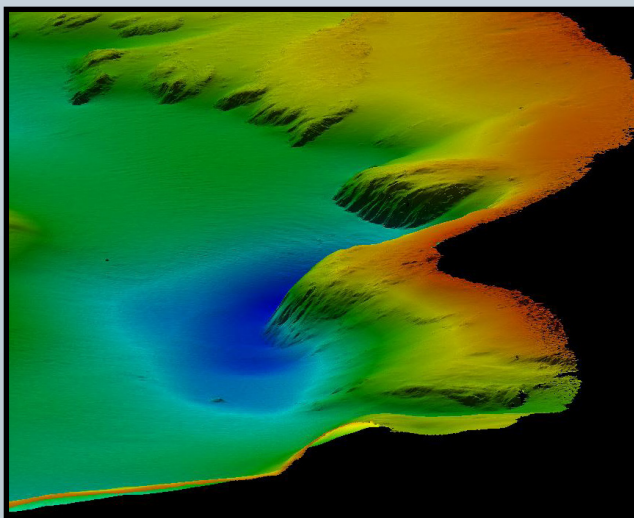
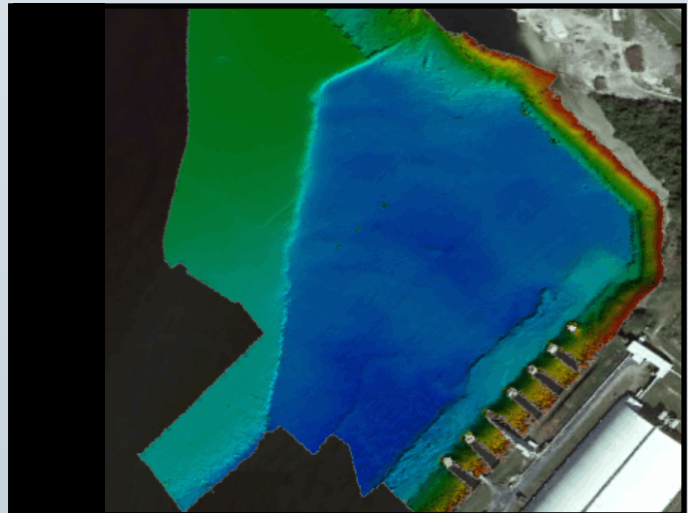
Applications

- ✓ Shallow Water Bathymetry
- ✓ Pipeline Surveys
- ✓ Pond, River and Estuary Surveys
- ✓ Harbor and Lake Surveys
- ✓ USV & UUV Ready
- ✓ High Resolution Multibeam-Sidescan

Options

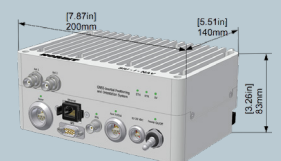
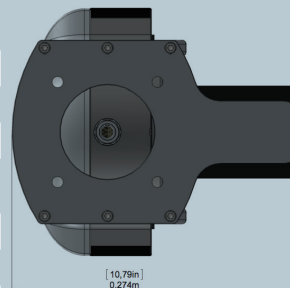
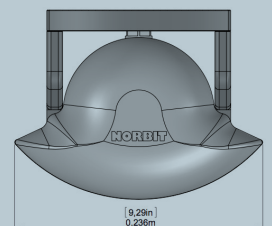
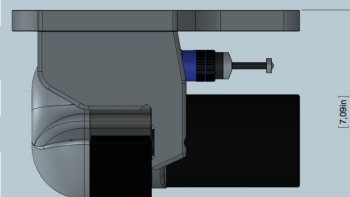
- ✓ Senior Hydrographer for Support and Training
- ✓ Sound Velocity Profiler
- ✓ Recommended option: RTK or PPK software (also avail. as a service)
- ✓ 200kHz Version
- ✓ Turnkey Survey Solutions
- ✓ Hull and Pole Mount Options
- ✓ Narrow Beam Option
- ✓ Acquisition, Navigation and Post Processing Software
- ✓ Can Be Delivered with e.g. HYPACK, QINSy, EIVA, CARIS and others

NORBIT iWBMSe Wideband Multibeam Sonar For Turnkey High Resolution Bathymetry



TECHNICAL SPECIFICATION

SWATH COVERAGE	5-210° FLEXIBLE SECTOR (SHALLOW WATER IHO SPECIAL ORDER >155°)
RANGE RESOLUTION	<10mm (ACOUSTIC w. 80kHz BANDWIDTH)
NUMBER OF BEAMS	256-512 EA & ED
OPERATING FREQUENCY	NOMINAL FREQUENCY 400kHz (FREQUENCY AGILITY 200-700kHz)
DEPTH RANGE	0.2-275m (160m TYPICAL @ 400kHz)
PING RATE	UP TO 60Hz, ADAPTIVE
RESOLUTION (ACROSS X ALONG)	STANDARD: 0.9° X 1.9° @400kHz AND 0.5° X 1.0° @700kHz. NARROW OPTION: 0.9° X 0.9° @400kHz AND 0.5° X 0.5° @700kHz
POSITION	HOR: ±(8mm +1ppm X DISTANCE FROM RTK STATION) VER: ±(15mm +1ppm X DISTANCE FROM RTK STATION) (ASSUMES 1m GNSS SEPARATION)
HEADING ACCURACY	0.08° (RTK) WITH 2m ANTENNA SEPARATION
PITCH/ROLL ACCURACY	0.03° INDEPENDENT OF ANTENNA SEPARATION
HEAVE ACCURACY	2 CM OR 2% (TRUEHEAVETM), 5 CM OR 5% (REAL TIME)
WEIGHT	6.5kg (AIR), 2.4kg (WATER) WITH BRACKET (LESS THAN 19KG WHEN PACKED IN PELICAN CASE)
INTERFACE	ETHERNET
CABLE LENGTH	STD 8m, OPTIONS: 2m, 25m, 50m
POWER CONSUMPTION	55W (70W MAX) (10-28VDC, 110-240VAC)
OPERATING TEMP.	-4°C TO +40°C (TOPSIDE -20°C TO +55°C)
STORAGE TEMP	-20°C to +60°C
ENVIRONMENTAL	TOPSIDE: IP67: DUST TIGHT, PROTECTED AGAINST THE EFFECT OF IMMERSION UP TO 1m/WET-END: 100m



Part #12006-AACDB

NORBIT SUBSEA | STIKLESTADVEIEN 11 | N-7041 TRONDHEIM | NORWAY | PHONE +47 73 98 25 50 | subsea@norbit.com

COPYRIGHT©2016 NORBIT, ALL RIGHTS RESERVED. WHILE EVERY EFFORT IS MADE TO ENSURE THE INFORMATION GIVEN IS ACCURATE, NORBIT DOES NOT ACCEPT LIABILITY FOR ANY ERRORS OR OMISSIONS, ALL WEIGHTS AND MEASURES ARE APPROXIMATE AND OTHER INFORMATION IN THIS DOCUMENT IS SUBJECT TO CHANGE WITHOUT NOTICE